

Easy LED

PRO Series



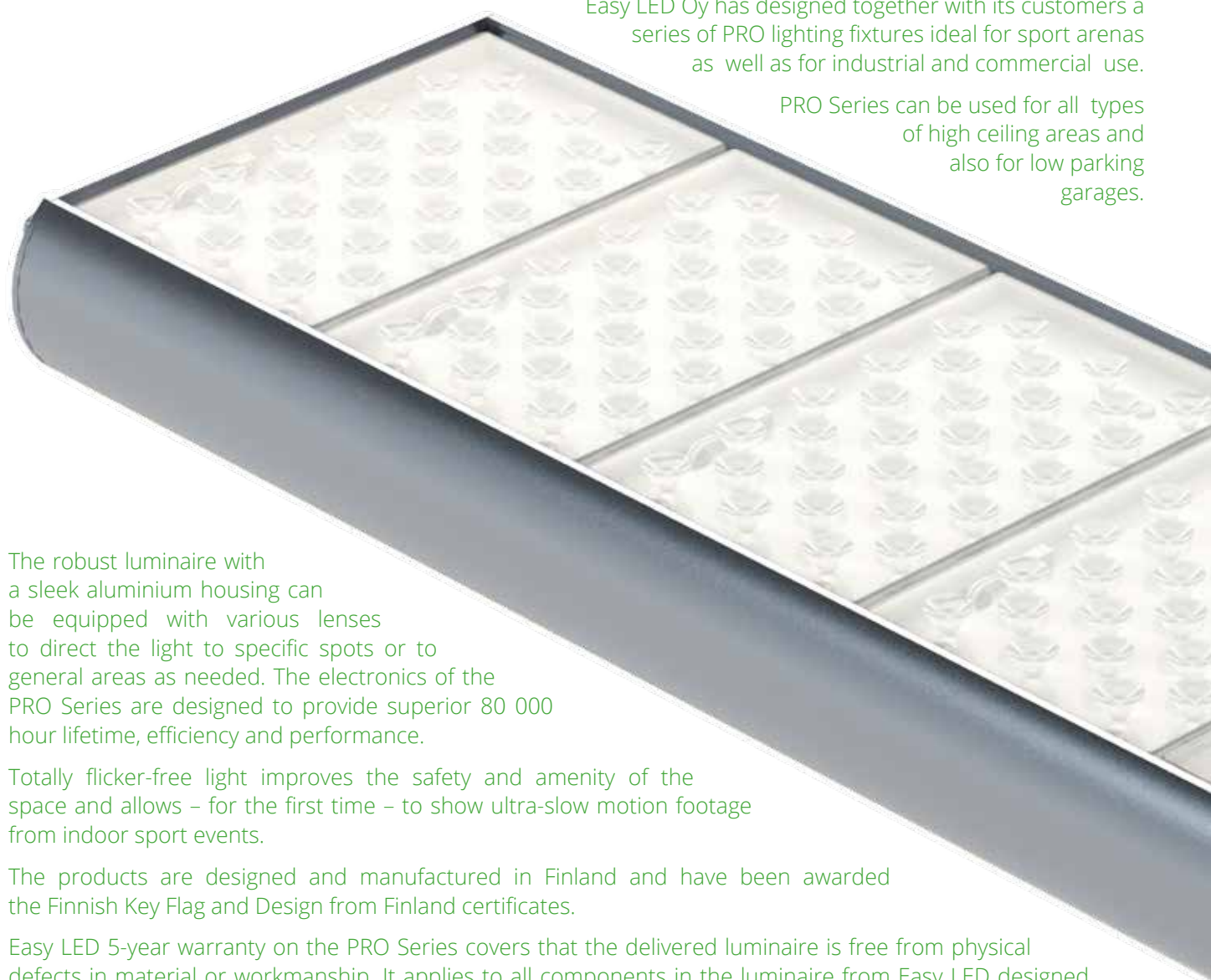
Industry
Sports
Retail
Leisure
Agriculture



PRO Series lighting fixtures for high ceiling areas & sport arenas

Easy LED Oy has designed together with its customers a series of PRO lighting fixtures ideal for sport arenas as well as for industrial and commercial use.

PRO Series can be used for all types of high ceiling areas and also for low parking garages.



The robust luminaire with a sleek aluminium housing can be equipped with various lenses to direct the light to specific spots or to general areas as needed. The electronics of the PRO Series are designed to provide superior 80 000 hour lifetime, efficiency and performance.

Totally flicker-free light improves the safety and amenity of the space and allows – for the first time – to show ultra-slow motion footage from indoor sport events.

The products are designed and manufactured in Finland and have been awarded the Finnish Key Flag and Design from Finland certificates.

Easy LED 5-year warranty on the PRO Series covers that the delivered luminaire is free from physical defects in material or workmanship. It applies to all components in the luminaire from Easy LED designed LED-modules to tailor-made Easy LED electronic control gear, the heart of the luminaire.

Benefits

Durability & low cost operation

are the highlights of this series to offer superior lifetime economy and performance.

Modular design

makes possible to select most efficient size for all mounting heights between 2 - 30 metres.

The design of the luminaires is set to achieve
**cost savings
&
ideal lighting.**

Quick and easy installation &

maintenance free design

– time savings even 80 % when compared to traditional lighting fixtures.

The custom design of the PRO Series electronics ensures

**long lifecycle
& stringent
quality
requirements.**

IP66

for indoor and outdoor lighting.



Application areas



Retail

Beautiful white light helps to bring out the vivid colours of the products.

In high ceiling areas maintenance costs are reduced due to longevity and high quality of electronics.



Leisure

PRO Series luminaires can be used for general lighting or by choosing different lenses the light can be focused on a desired area.



Sports

Totally flicker-free light improves the safety and amenity of the space. Available Easy LED HD-FF light allows - for the first time - to show ultra-slow motion footage from indoor sport events.

Another advantage of PRO Series is the possibility to direct light also outdoors exactly on the area needed - be it a football field or a ski slope.



Agriculture

Good lighting is essential to the health of the animals. It is important that the light does not pulsate, as this can be unsettling for the livestock.

PRO Series models used in agriculture have surface finish of painted aluminium that is easy to keep clean. It is resistant to heat, cold, humidity or wet, ammonium and gas. Nano-coating for optics or ceramic coating for entire luminaire are available for even improved wear resistance.

PRO Series luminaires are not just for high ceiling areas, but also provide quality of light and cost-effectiveness in parking garages and other lower spaces.



Industry

PRO Series industrial luminaires are designed from the outset to meet the challenges of harsh industrial conditions. In a professional setting, the design of luminaire offers cost savings as well as ideal working conditions.

In fact it is difficult to find an application where the PRO Series would not shine, as the complete package is designed to be operated from -40 to up to +55°C ambient temperatures.



Flicker-free & pure white

For the first time in the world totally flicker-free light

Easy LED PRO Series luminaires with optional flicker-free HD-FF (high definition, flicker-free) light are a perfect choice especially for sport arenas. The Easy LED HD-FF light improves the safety and amenity of the space and allows shooting ultra-slow motion footage even beyond 100 000 FPS. This creates totally new opportunities for TV-broadcasting and coaching of indoor sports.

The HD-FF enabled PRO Series luminaires can even be dimmed without compromising light quality. This results to even greater savings when full light level is not required without limiting usage of high speed filming or reducing uniformity of the light installation.

The remarkable Easy LED HD-FF light technology is integrated in PRO Series X-models.



By choosing Easy LED lighting solutions you will also benefit from
considerable cuts
in the energy bills &
fewer arduous maintenance
days up in the ceiling.



CASE: Helsinki Ice Hall

In 2013 legendary Helsinki Ice Hall got Easy LED HD-FF luminaires both in the main and practicing arenas.

By choosing Easy LED PRO Series with HD-FF light, produced from top quality components, the arena wins a lot:

- annual energy savings of 75 %
- reduced need for cooling
- harder, faster and safer ice
- improved audience experience
- better environment for tv-broadcasting
- new tools for coaching

and much more.

The new lighting solution offers natural, instant and uniform colour temperatures on the arenas with no extra shadows around the players; all features greatly appreciated by photographers and TV production crews.

Easy LED's future proof technology also allows easy and seamless product upgrades as LED technology evolves over the years.



Variety with modularity

Modular design of PRO Series enables a product range that is suited for all lighting applications imaginable.

PRO Series lighting solution has models with total power consumption ranging from 26 to 480 watt and produced luminous flux from 2 500 to 56 000 lumens.

Tailor-made drivers

Easy LED uses tailor-made drivers for the PRO Series to obtain the performance expected.

The LED-drivers are integrated inside the casing and are designed and manufactured in Finland, exclusively for these products.

The advanced power management optimized for the luminaire is beyond the norm. Patented current management technology increases efficacy and reduces thermal build up inside the luminaire.

Different PRO Series models have different LED-drivers optimized for their size and power levels to gain best results.

The Easy LED electronic control gear is the key to the uncompromised usage life of the PRO Series.



Innovative and time saving connections

QUICKON fast connection for time savings of up to 80 % for on-site installation.

QPD-connectors for safe power delivery with multiple versions available.

M12 connector for 1-10 V dimming, capable of using any control system.

Proven means of negating internal condensation via included relief valve.



All these components create solution efficacy of up to 122 lm/W. Materials, electronics and thermal management – the complete PRO Series system – is designed to achieve a design life of up to 80 000 hours even with ambient temperatures as high as +50°C.



The best lens optics

were chosen to create all the differing beam characteristics for PRO Series.

Several light distribution options are available and new ones are continuously being developed. Additionally LED street optics solutions like UP-R or UP-D can be fitted to PRO Series. For special applications even custom optics can be utilized.

Easy LED optimized lens modules are made of UV-stabilized PC.



LED-modules with the goal of best possible longevity, efficacy and reliability

created by Easy LED specially for PRO Series. To reach the goals Osram Opto Semiconductors Oslon series LEDs were chosen. Oslon SSL series offers the light colour temperatures (CCT nominal) of 6 000, 5 000 or 4 000 K with multiple colour rendering index.

Low LED drive current of less than 350 mA is a crucial part in gaining the best possible result.



Tough aluminium housing

with ingress protection rating of IP66 and PC optics with high impact resistance – this luminaire is made for extreme situations.

Low copper content guarantees best longevity even when installed outdoors.

Instead of anodized aluminium the units are also available in other surface treatments and RAL colors with multi-step coating processes.

The fixing brackets are made for wide diversity of mounting requirements. Also available options that withstand strong vibrations in the roughest environments. All screws are non-corrosive stainless steel.



PRO Solution



Highbay reflector luminaire

PRO 8X Oslon 240

Light source	1 x metal-halide lamp 400 W	Easy LED LED-modules with 240 x Oslon SSL high power LEDs by Osram Opto Semiconductors
Light distribution	Generic	Quality optimized efficient 60 degree beam
Gross luminous flux (lamp)	34 000 lm	-
Light output ratio (luminaire)	66 %	-
Net luminous flux	22 400 lm (4 400 K, CRI 65)	21 500 lm (5 000 K, CRI 72) 24 000 lm (6 000 K, CRI 70) 20 500 lm (4 000 K, CRI 72)
Power consumption (luminaire)	440 W	198 W
Total luminaire efficacy	51 lm/W	109 lm/W (121 lm/W and 104 lm/W)
Maintenance requirements	after approx. 8 000 h	after more than 80 000 h
Light control	<ul style="list-style-type: none"> • Continuous operation • Switching on / off with time loss (increase to complete lumen output following switch-on, cooling down following switch off) 	<ul style="list-style-type: none"> • 1-10 V control interfaces standard • Unlimited switching • Smooth instant start • Full dimming control • Instant on after power outage • Safety light available • Flicker-free available • Multiple light distribution optics to choose from • Ultra low P5 5 % dimming optional • Instant light even in -40°C

PRO Series range

PRO 100



PRO 200



PRO 400



PRO 500



PRO 700



PRO 6X



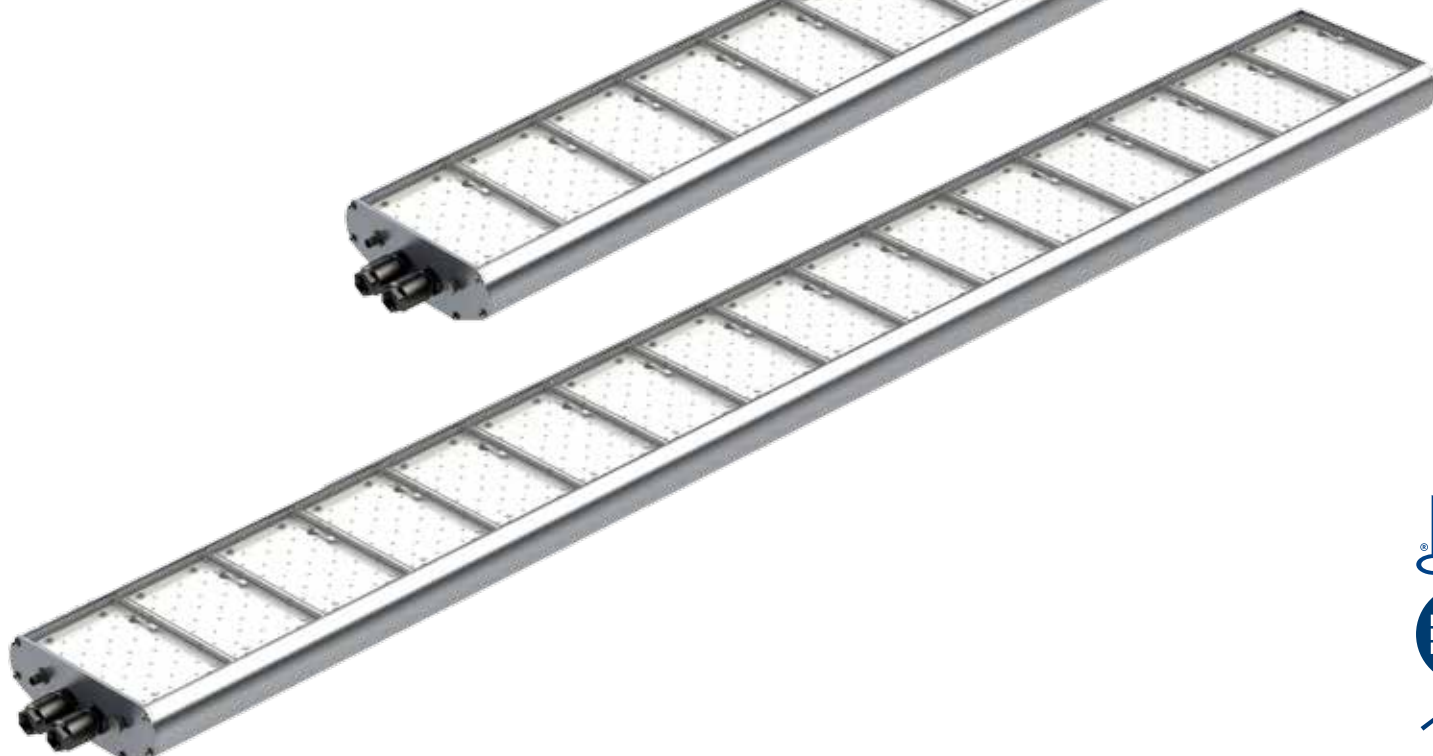
PRO 8X



PRO 12X



PRO 16X



Advantages of PRO Series

Tailor-made Easy LED drivers for PRO Series

EasyLED uses multiple GS certified constant current LED drivers to provide the best product always with full compliance to protection and EMC requirements.

Having tailor-made drivers allows optimized system level solution with the highest possible luminaire efficacy and highest overall reliability. This is possible for any model size, as the LED driver family is designed from the very beginning for driver combinations.

The drivers have been designed to endure the temperatures that can exist inside the luminaires when operated at the maximum ambient temperatures.

To be certain that the stringest quality requirements are met all drivers are tested for correct operation and performance values before being installed inside the luminaires. Each luminaire is fully tested and inspected after final assembly at the Easy LED factory.

Limitless light control

With Easy LED and PRO Series even the standard models are dimmable, but when exclusive features and even more flexibility are required the PRO Series does not disappoint.

The unique P5 or the unprecedented HD-FF are available and result in an unparalleled light control freedom. The P5 makes dimming available and enables even greater savings simultaneously. The HD-FF light on the other hand creates a unique and incredible flicker-free experience.

Intelligent thermal protection

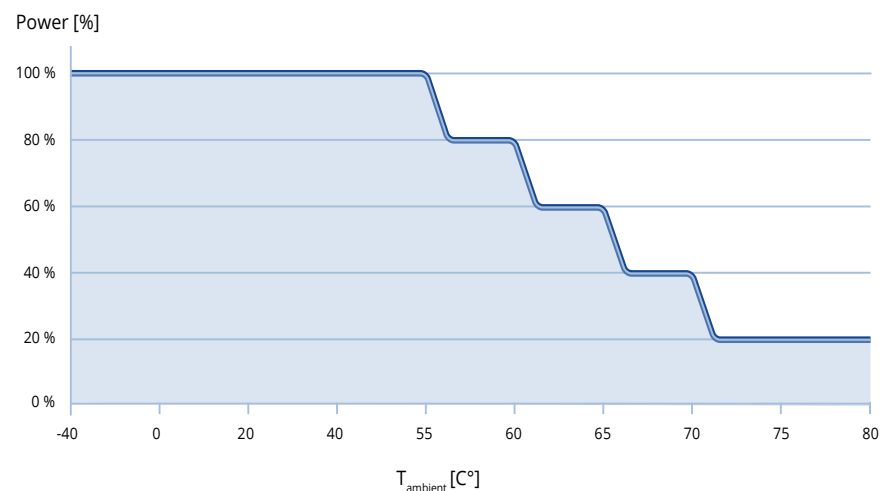
The intelligent automatic thermal protection in Easy LED luminaires ensures the long life expectancy of the product even if erroneously used in operating temperatures exceeding the rated maximum.

This feature is built in the tailor-made Easy LED constant current LED drivers and operational immediately after powering on the luminaire.

The power level of the luminaire is automatically dropped in smooth 20 % steps if the product is used in a hot environment where ambient temperatures exceed +55°C (or +40°C for 320 mA models).

Advanced hysteresis is used when ambient temperatures return to rated levels. The luminaire will never be completely shut down for human safety and maintenance purposes.

Simplified operating principle of built in Easy LED intelligent thermal protection



Secure cooling design

Passive cooling without fins is the safest way to cool a LED luminaire. The PRO Series provides clear benefits to any other design. The accomplished design makes nearly any installation possible with the PRO Series. Only mounting of PRO Series inside insulation is not possible. The lighting cooling solution also fulfills the D-marking requirements for luminaires with limited surface temperatures (EN 60598-2-24) for even more interesting installation possibilities.

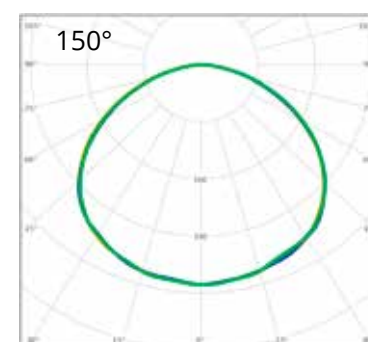
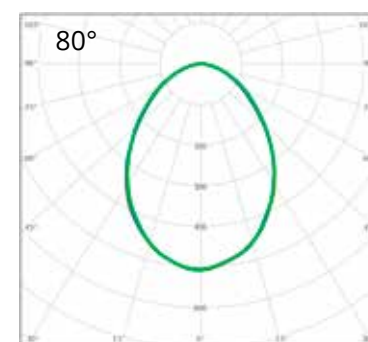
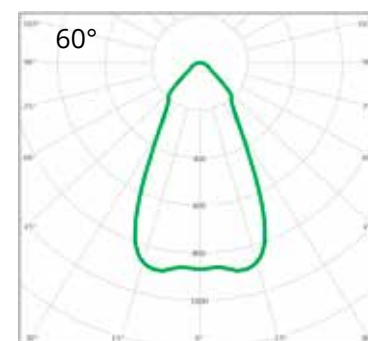
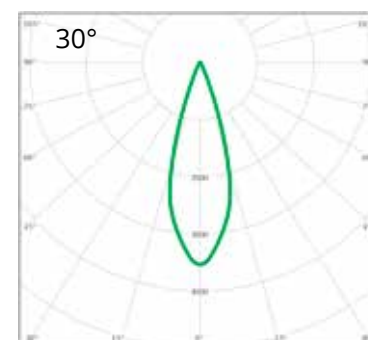
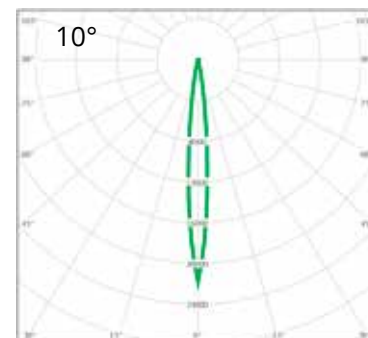
It is also obvious that a product designed to last decades like the PRO Series needs to have a cooling that does not rely on moving parts. The smooth surfaces do not collect dirt like other designs, are easy to keep clean and are in every way a safe and long lasting solution.



PRO Series technical details

Standard opening angles

Housing	Anodized aluminium – other surface treatments available in RAL colours
Optics	Easy LED optimized UV-stabilized PC optics with high impact resistance
Nano-coating for optics or ceramic coating for entire luminaire available for even improved wear resistance	
Protection rating	IP66, D-marking
Temperature range	Designed for ambient temperatures from -40°C to +55°C (260 mA) or -40°C to +40°C (320 mA) with 95 % RH
Luminaire continuous life	80 000 h / 80 % (260 mA at $T_a < 50^\circ\text{C}$ and 320 mA at $T_a < 40^\circ\text{C}$)
Connectors	QPD-connectors selectable 3+PE or 4+PE, selectable with 1 connector or 2 connectors for series installation M12 for dimming control voltage 1 - 10 V with P5 and HD-FF light features available
Light level dimming range	20 - 100 % P5 5 - 100 % HD-FF 33 - 100 % 320 mA 40 - 100 % 260 mA
Safety light option	available
Input voltage	230 VAC (Operation voltage range: 195,5 - 253 VAC)
Input frequency	50/60 Hz
Power factor (PF) typical	0,97 (PRO 100: 0,9)
Intelligent inrush current control	as standard
Luminaire protection class	I
Installation direction	No limits. (Not to be installed inside insulation to enable cooling)



Standard light color selection (CCT nominal)	6 000 K	5 000 K	4000 K
Color Rendering Index (CRI) typical	70	72 (with 82 available)	
Luminaire luminous efficacy typical* (CRI 70 / 72)	115 lm/W	110 lm/W	105 lm/W

* Dependent on choice of optical solution. For latest values, ask for light distribution files.



PRO 100



LEDs 30

Weight 1,4 kg

Dimensions (L x W x H)
132 x 230 x 86 mm

1 Easy LED driver

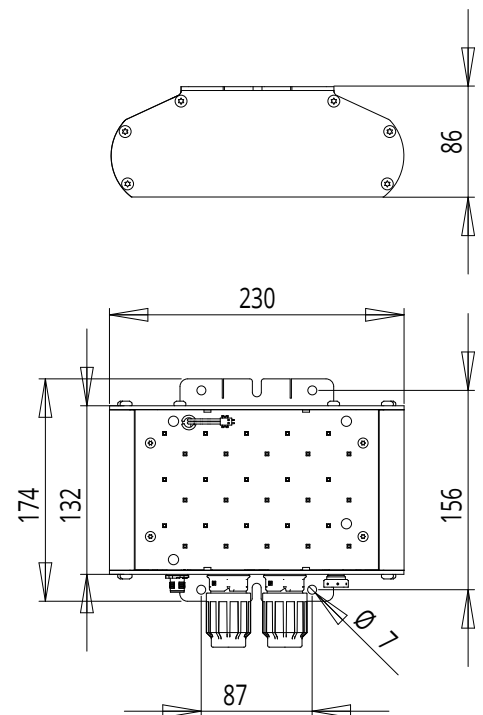
Dimming minimum power level
24 %

Dimming method
Isolated 1-10 V (current
consumption 1,0 mA max)

Surge protection
(common & diff) 3 kV / 3 kA

Inrush current peak
13,3 A, t = 42 us (50 % of I_{peak})

Earth leakage current
0,20 mA



System Power [W]	260 mA	26
	320 mA	-
Current [A]	260 mA	0,13
	320 mA	-
Luminous Flux* [lm]	260 mA	3 000
	320 mA	-

* Luminous flux for 6 000 K. Values shown are nominal values and are subject to +/- 10 % tolerance. For latest values, ask for light distribution files.

PRO 200

Also available as PRO 2X



LEDs 60

Weight 2,5 kg

Dimensions (L x W x H)
257 x 230 x 86 mm

1 Easy LED driver

Dimming minimum power level
33 %

Available: P5 24 %,
HD-FF 320 mA 40 %, and 260 mA 48 %

Dimming method

Isolated 1-10 V (current consumption 1,0 mA max)

Surge protection

(common & diff) 6 kV / 3 kA

Inrush current peak

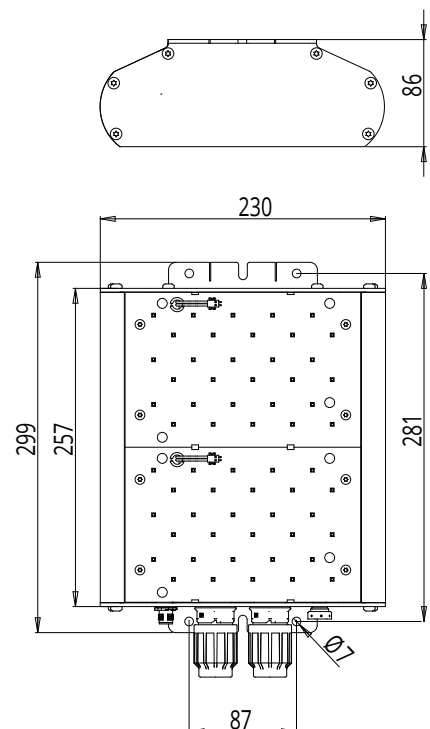
1 A, $t = 10 \text{ ms}$ (50 % of I_{peak})

Earth leakage current

0,41 mA

Thermal protection

Automatic thermal protection with output current dimming



System Power [W]	260 mA	50
	320 mA	60
Current [A]	260 mA	0,23
	320 mA	0,28
Luminous Flux* [lm]	260 mA	6 000
	320 mA	7 000

* Luminous flux for 6 000 K. Values shown are nominal values and are subject to +/- 10 % tolerance. For latest values, ask for light distribution files.

PRO 400

Also available as PRO 3X



LEDs 90

Weight 3,6 kg

Dimensions (L x W x H)
382 x 230 x 86 mm

1 Easy LED driver

Dimming minimum power level

27 %

Available: P5 17 %,
HD-FF 320 mA 36 %, and 260 mA 44 %

Dimming method

Isolated 1-10 V (current consumption 1,0 mA max)

Surge protection

(common & diff) 6 kV / 3 kA

Inrush current peak

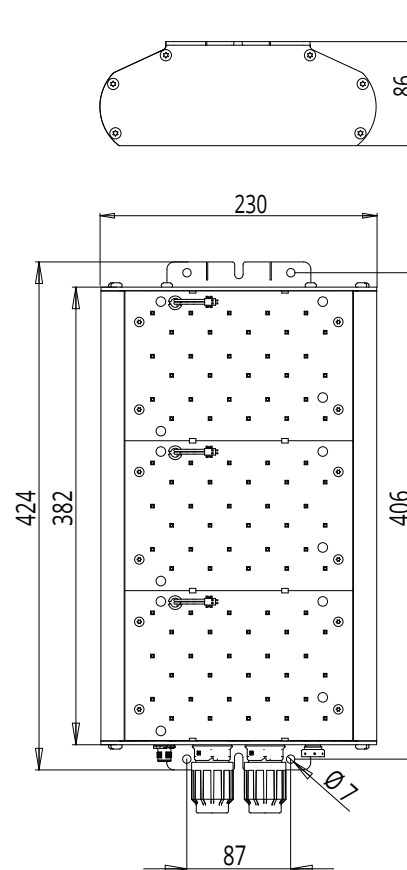
1 A, t = 10 ms (50 % of I_{peak})

Earth leakage current

0,41 mA

Thermal protection

Automatic thermal protection with output current dimming



System Power [W]	260 mA	75
	320 mA	90
Current [A]	260 mA	0,35
	320 mA	0,41
Luminous Flux* [lm]	260 mA	9 000
	320 mA	10 500

* Luminous flux for 6000 K. Values shown are nominal values and are subject to +/- 10 % tolerance. For latest values, ask for light distribution files.

PRO 500

Also available as PRO 4X



LEDs 120

Weight 4,6 kg

Dimensions (L x W x H)
507 x 230 x 86 mm

1 Easy LED driver

Dimming minimum power level
24 %

Available: P5 14 %,
HD-FF 320 mA 34 %,
and 260 mA 42 %

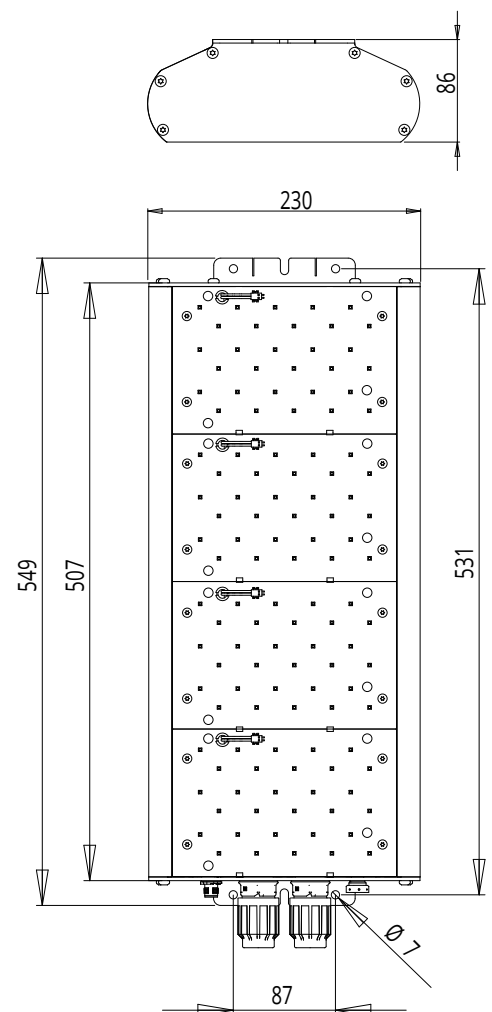
Dimming method
Isolated 1-10 V (current
consumption 1,0 mA max)

Surge protection
(common & diff) 6 kV / 3 kA

Inrush current peak
1 A, $t = 10 \mu s$ (50 % of I_{peak})

Earth leakage current
0,41 mA

Thermal protection
Automatic thermal protection
with output current dimming

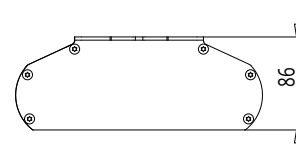


System Power [W]	260 mA	99
	320 mA	120
Current [A]	260 mA	0,46
	320 mA	0,55
Luminous Flux* [lm]	260 mA	12 000
	320 mA	14 000

* Luminous flux for 6 000 K. Values shown are nominal values and are subject to +/- 10 % tolerance. For latest values, ask for light distribution files.

PRO 700

Also available as PRO 5X



LEDs 150

Weight 5,8 kg

Dimensions (L x W x H)

632 x 230 x 86 mm

2 Easy LED drivers

Dimming minimum power level

30 %

Available: P5 21 %,

HD-FF 320 mA 38 %,

and 260 mA 46 %

Dimming method

Isolated 1-10 V (current consumption 2,0 mA max)

Surge protection

(common & diff) 6 kV / 3 kA

Inrush current peak

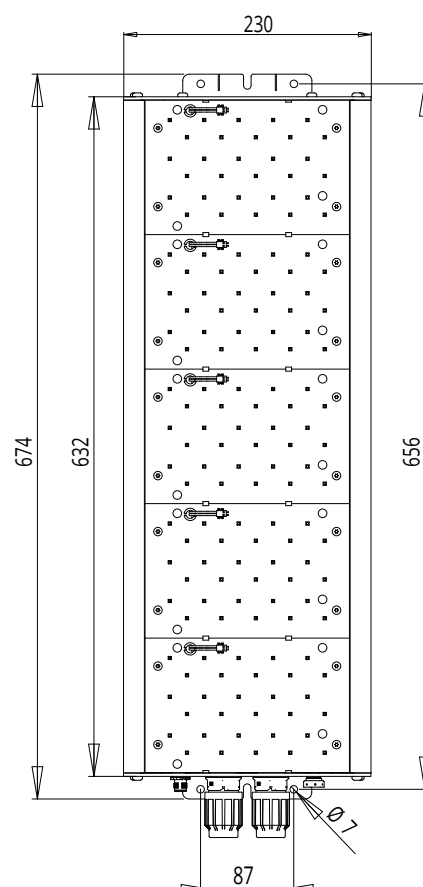
2 A, t = 10 ms (50 % of I_{peak})

Earth leakage current

0,82 mA

Thermal protection

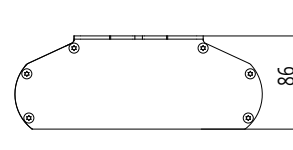
Automatic thermal protection with output current dimming



System Power [W]	260 mA	124
	320 mA	150
Current [A]	260 mA	0,58
	320 mA	0,68
Luminous Flux* [lm]	260 mA	15 000
	320 mA	17 500

* Luminous flux for 6 000 K. Values shown are nominal values and are subject to +/- 10 % tolerance. For latest values, ask for light distribution files.

PRO 6X



LEDs 180

Weight 6,1kg

Dimensions (L x W x H)
757 x 230 x 86 mm

2 Easy LED drivers

Dimming minimum power level
27 %

Available: P5 17 %,
HD-FF 320 mA 36 %,
and 260 mA 44 %

Dimming method

Isolated 1-10 V (current
consumption 2,0 mA max)

Surge protection

(common & diff) 6 kV / 3 kA

Inrush current peak

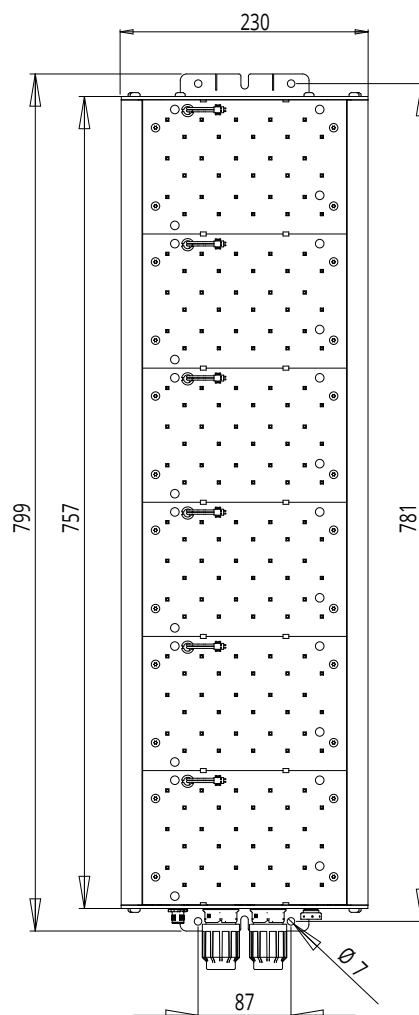
2 A, $t = 10 \text{ ms}$ (50 % of I_{peak})

Earth leakage current

0,82 mA

Thermal protection

Automatic thermal protection
with output current dimming



System Power [W]	260 mA	149
	320 mA	190
Current [A]	260 mA	0,70
	320 mA	0,81
Luminous Flux* [lm]	260 mA	18 000
	320 mA	21 000

* Luminous flux for 6 000 K. Values shown are nominal values and are subject to +/- 10 % tolerance.
For latest values, ask for light distribution files.



PRO 8X



LEDs 240

Weight 8,6 kg

Dimensions (L x W x H)
1 007 x 230 x 86 mm

2 Easy LED drivers

Dimming minimum power level

24 %

Available: P5 14 %,
HD-FF 320 mA 34 %,
and 260 mA 42 %

Dimming method

Isolated 1-10 V (current
consumption 2,0 mA max)

Surge protection (common & diff)

6 kV / 3 kA

Inrush current peak

2 A, t = 10 ms (50 % of I_{peak})

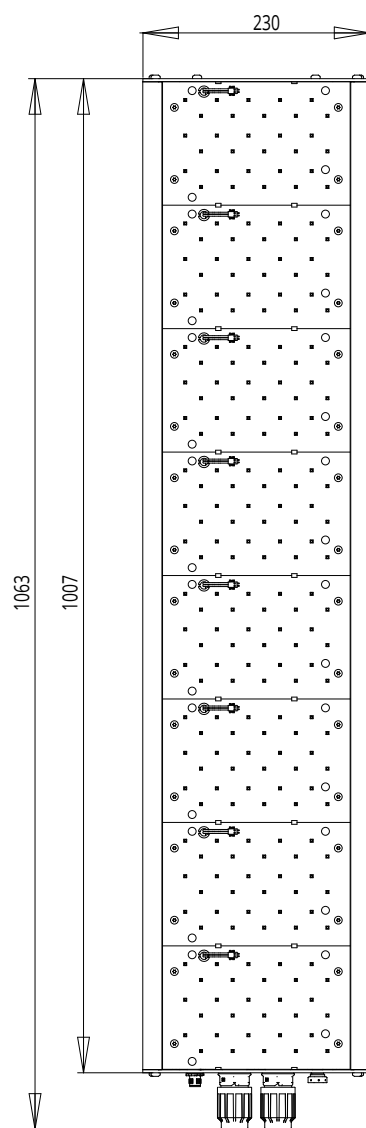
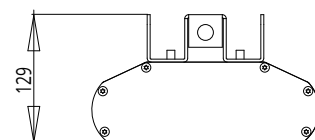
Earth leakage current

0,82 mA

Thermal protection

Automatic thermal protection
with output current dimming

This model is built with
back mounting.
Please order mounting
accessories separately.



System Power [W]	260 mA	198
	320 mA	240
Current [A]	260 mA	0,93
	320 mA	1,09
Luminous Flux* [lm]	260 mA	24 000
	320 mA	28 000

* Luminous flux for 6 000 K. Values shown are nominal values and are subject to +/- 10 % tolerance.
For latest values, ask for light distribution files.

PRO 12X



LEDs 360

Weight 13,8 kg

Dimensions (L x W x H)
1 507 x 230 x 86 mm

3 Easy LED drivers

**Dimming minimum
power level**

24 %

Available: P5 14 %,
HD-FF320 mA 34 %,
and 260 mA 42 %

Dimming method

Isolated 1-10 V (current
consumption 3,0 mA max)

Surge protection (common & diff)

6 kV / 3 kA

Inrush current peak

3 A, t = 10 ms (50 % of I_{peak})

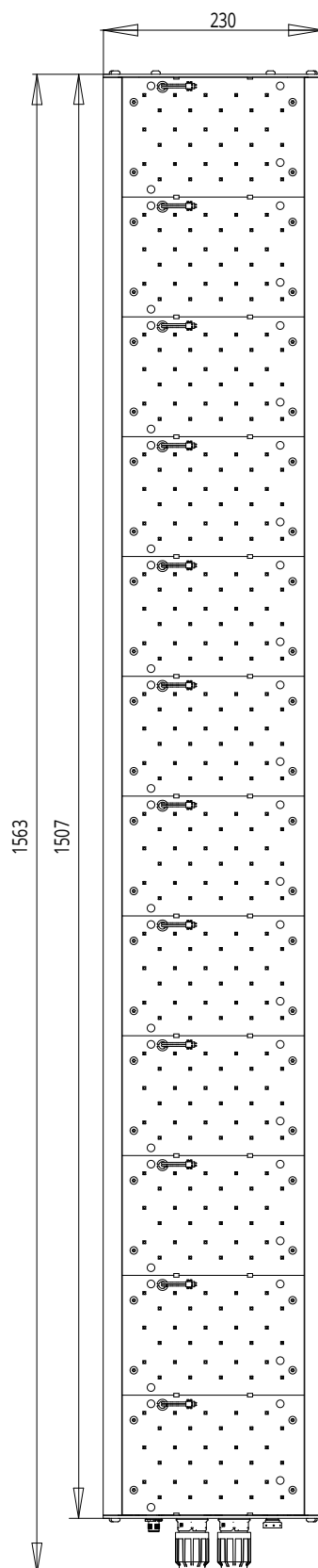
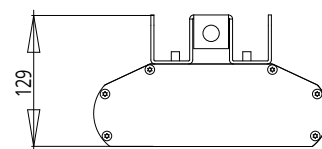
Earth leakage current

1,23 mA

Thermal protection

Automatic thermal protection
with output current dimming

This model is built with
back mounting.
Please order mounting
accessories separately.



System Power [W]	260 mA	298
	320 mA	360
Current [A]	260 mA	1,39
	320 mA	1,63
Luminous Flux* [lm]	260 mA	36 000
	320 mA	42 000

* Luminous flux for 6 000 K. Values shown are nominal values and are subject to +/- 10 % tolerance.
For latest values, ask for light distribution files.

PRO 16X



LEDs 480

Weight 19,5 kg

Dimensions (L x W x H)
2 007 x 230 x 86 mm

4 Easy LED drivers

**Dimming minimum
power level**
24 %

Available: P5 14 %,
HD-FF 320 mA 34 %,
and 260 mA 42 %

Dimming method
Isolated 1-10 V (current
consumption 4,0 mA max)

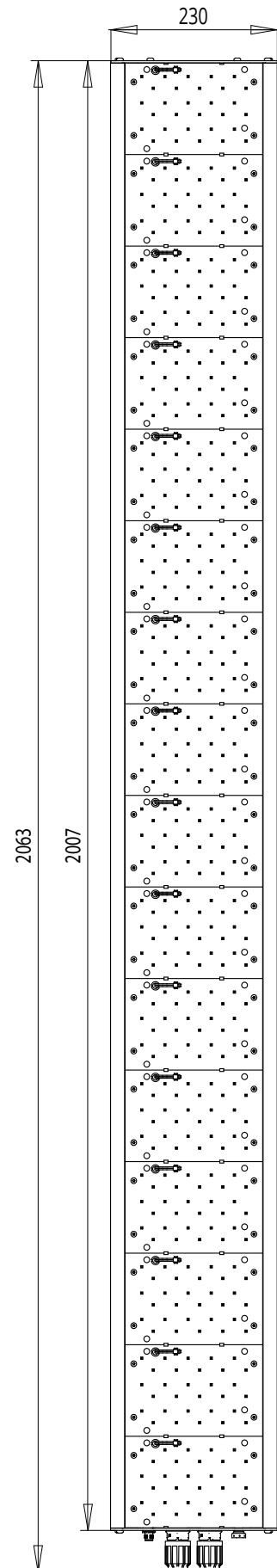
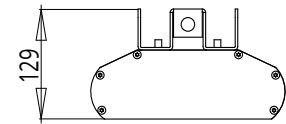
Surge protection
(common & diff) 6 kV / 3 kA

Inrush current peak
4 A, t = 10 ms (50 % of I_{peak})

Earth leakage current
1,64 mA

Thermal protection
Automatic thermal protection
with output current dimming

This model is built with
back mounting.
Please order mounting
accessories separately.



System Power [W]	260 mA	398
	320 mA	480
Current [A]	260 mA	1,86
	320 mA	2,18
Luminous Flux* [lm]	260 mA	48 000
	320 mA	56 000

* Luminous flux for 6 000 K. Values shown are nominal values and are subject to +/- 10 % tolerance.
For latest values, ask for light distribution files.

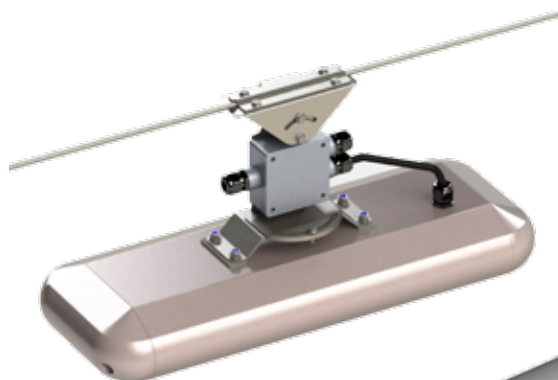
Optional features



PIR-96

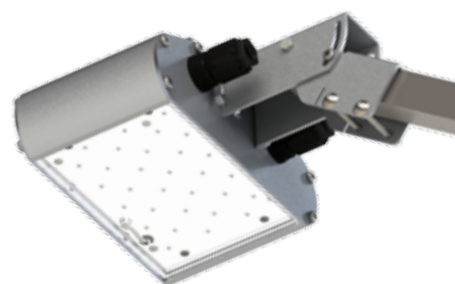
Easy PIR-96 is a compact and easy-to-install motion detector device that provides energy-saving functions.

The device softly tunes the lights fully on when motion is detected in the controlled area and dims them down smoothly to a desired level when there is no movement. The Easy PIR-96 is especially designed for use in service stations. Installation with M12 connector.



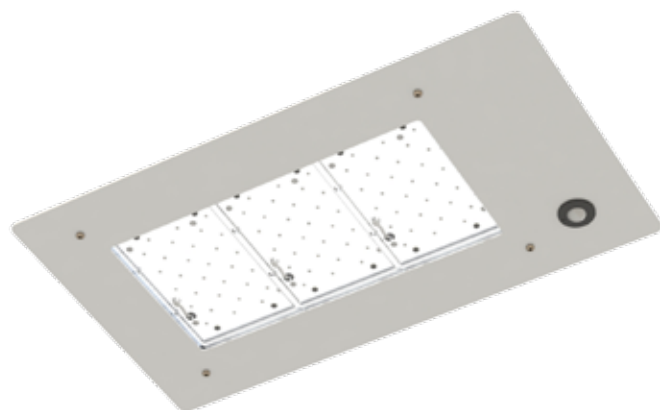
PRO Wire

Even the smaller PRO Series sizes can be installed to horizontal wires as the PRO Wire model. With multiple adjustments the PRO Wire makes street lighting efficient. Multiple optics are naturally available to suit any application.



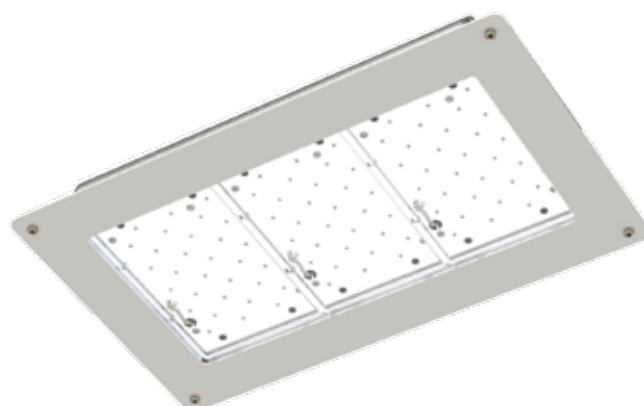
Multipurpose arm

The PRO Series becomes even more flexible with the multipurpose arm suitable to applications like advertising signs or facade lighting. For pipe diameter 30 - 38 mm.



PRO FUEL 400

Easy LED Oy has developed PRO 400 FUEL lights particularly for service stations. With the elegant mounting collar the lighting fixture inconspicuously suits for any roof construction. Optionally the mounting collar may also include the PIR-96 motion sensor.



Mounting plate

Multiple sizes and types of mounting plates are available to enable submersing the PRO Series inside different ceiling types for a sleek professional look.

Installation

The PRO Series is a multipurpose product line with almost unlimited possibilities. The installation system is designed to adjust with your needs. And thanks to advanced cooling concept and IP66 design the mounting directions or places of installation are nearly limitless.

PRO 100 to PRO 6X



Standard mounting

PRO Series by itself can be directly installed into regular industrial light installation rails. The standard mounting makes direct mounting to ceiling, wall or custom brackets easy.



Vertical cable/chain mounting

Units can be ordered with detachable triangle-pieces, which make possible to install the units into existing wires or other suspension.



Arm mounting

Adjustable galvanised steel mounting for multiple usage scenarios where controlling light is essential - such as high mast area lighting. Wall mounting and many other adjustable installations are also made possible.

PRO 8X, PRO 12X and PRO 16X

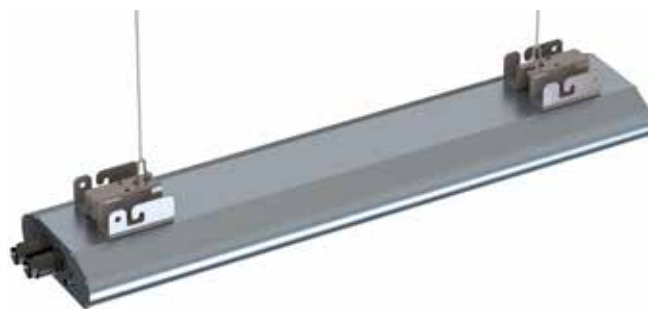
Ceiling mounting

Galvanised steel mounting for suspending the luminaire directly below ceiling.



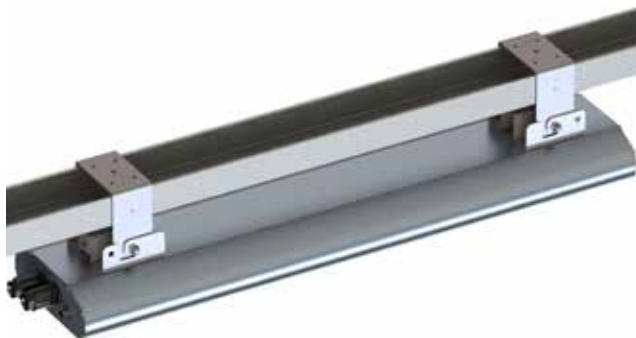
Vertical wire/chain suspension

Luminaire standard mounting module is compatible with carabiner hooks of your choosing for suspending the luminaire.



Rail installation mounting

Galvanised steel mountings for placing luminaires on industrial installation rails up to 110 mm.



Horizontal wire suspension

Galvanised steel brackets for suspending luminaire on horizontal cable.



Arm mounting

Adjustable galvanised steel mounting for multiple usage scenarios such as walls, ceilings or high masts where controlling light is essential.



Truss mounting

Truss mounting clamps for adjustable installation on a truss system Ø 48 - 52 mm.



Luminaire selection wizard

Simulation properties for fixture number estimates

Light CCT 5 000 K
 Reflection factors 50 / 30 / 20
 Maintenance factor 0,80

Installation height is the same as the room height

Select higher-powered PRO Series model for more cost efficient installation

Room height [m]	Model	Optics	Em [lx]	50			100			200			300			400			500			800		
				Area [m²]																				
				200	500	1000	200	500	1000	200	500	1000	200	500	1000	200	500	1000	200	500	1000	200	500	1000
3	PRO 100	150° Frost	Number of luminaires in the room	5,8	13,7	26,2	11,7	27,5	52,3	23,9	55,7	105,9	36,1	83,9	159,5	48,4	112,1	213,1	60,6	140,3	266,8	96,9	224,4	426,9
4	PRO 200	80° Frost		2,9	6,8	12,9	5,7	13,5	25,8	12,0	27,8	52,8	18,3	42,1	79,7	24,5	56,4	106,7	30,7	70,7	133,6	49,0	113,2	213,8
	PRO 200 - 320mA	80° Frost		2,4	5,7	10,8	4,8	11,4	21,7	10,1	23,4	44,3	15,4	35,4	67,0	20,6	47,4	89,6	25,8	59,4	112,3	41,2	95,1	179,6
6	PRO 400	80° Frost		2,3	5,0	9,4	4,5	10,0	18,9	9,6	20,7	38,4	14,6	31,5	57,8	19,6	42,1	77,3	24,6	52,8	96,9	39,4	84,5	155,0
	PRO 400 - 320mA	80° Frost		1,9	4,2	7,9	3,8	8,4	15,9	8,1	17,4	32,2	12,3	26,5	48,6	16,5	35,4	65,0	20,7	44,4	81,4	33,1	71,1	130,3
8	PRO 500	60°		1,5	3,3	6,3	3,0	6,7	12,6	6,2	14,0	25,9	9,5	21,1	39,6	12,7	28,6	53,1	16,4	35,9	66,4	26,2	57,5	106,2
	PRO 500 - 320mA	60°		1,3	2,8	5,3	2,5	5,6	10,6	5,2	11,7	21,8	8,0	17,7	33,3	10,7	24,0	44,6	13,8	30,2	55,8	22,0	48,3	89,3
10	PRO 500	60°		1,6	3,6	6,7	3,2	7,3	13,3	7,2	15,2	27,8	11,1	23,2	42,1	14,9	31,1	56,4	18,7	39,0	70,6	29,9	62,3	112,9
	PRO 500 - 320mA	60°		1,3	3,1	5,6	2,7	6,1	11,2	6,0	12,8	23,3	9,3	19,5	35,4	12,5	26,1	47,4	15,7	32,7	59,3	25,1	52,4	94,9
12	PRO 700	60°		1,5	3,1	5,7	2,9	6,3	11,4	6,4	13,2	23,5	9,9	20,1	35,6	13,4	26,8	47,6	16,9	33,6	59,7	27,0	53,7	95,5
	PRO 700 - 320mA	60°		1,2	2,6	4,8	2,4	5,3	9,6	5,4	11,1	19,7	8,3	16,9	29,9	11,3	22,5	40,0	14,2	28,2	50,1	22,7	45,2	80,2
15	PRO 700	30°		1,0	2,5	4,8	2,0	5,0	9,6	4,5	10,7	20,2	7,1	16,4	30,8	9,7	22,0	41,4	12,3	27,7	51,9	19,6	44,2	83,1
	PRO 700 - 320mA	30°		0,8	2,1	4,0	1,6	4,2	8,0	3,8	9,0	17,0	6,0	13,8	25,9	8,1	18,5	34,8	10,3	23,2	43,6	16,5	37,2	69,8
20	PRO 6X	30°		1,0	2,3	4,3	2,0	4,7	8,7	4,5	9,8	18,0	7,0	15,0	27,5	9,5	20,1	36,9	11,9	25,3	46,3	19,1	40,4	74,1
	PRO 6X - 320mA	30°		0,8	2,0	3,6	1,6	3,9	7,3	3,8	8,2	15,2	5,9	12,6	23,1	8,0	16,9	31,0	10,0	21,2	38,9	16,0	33,9	62,3

Select wider optics for more uniform results

Ordering numbers

Luminaires with the below order codes include following features

Mounting	standard
Housing	anodized aluminium
Electrical connections	2 x 5 QPD (4+PE) for series connecting
Control connection	M12 for 1 - 10 V dimming
Power version	drive current 260 mA
Design ambient temperatures	-40 °C ... +55 °C

Optics	Colour temperature	PRO 100	PRO 200	PRO 400	PRO 500	PRO 700	PRO 6X
150° Frost	6 000 K	100 346	100 269	100 395	100 434	100 0046	100 0433
	5 000 K	100 330	100 285	100 0387	100 0397	100 0100	100 0434
	4 000 K	100 476	100 477	100 0243	100 537	100 0126	100 0435
150° Clear	6 000 K	100 0319	100 0377	100 0388	100 0398	100 0403	100 0436
	5 000 K	100 0320	100 0378	100 0389	100 0399	100 0404	100 0437
	4 000 K	100 295	100 0379	100 0190	100 0400	100 0333	100 0438
80° Frost	6 000 K	100 0245	100 412	100 324	100 382	100 0405	100 0439
	5 000 K	100 0372	100 511	100 0390	100 364	100 444	100 0440
	4 000 K	100 549	100 478	100 507	100 0108	100 0107	100 0441
80° Clear	6 000 K	100 0373	100 0381	100 0391	100 268	100 0406	100 0442
	5 000 K	100 0374	100 0055	100 0054	100 0401	100 424	100 0443
	4 000 K	100 072	100 0382	100 349	100 378	100 0209	100 0444
60°	6 000 K	100 0115	100 0384	100 0207	100 551	100 0122	100 0445
	5 000 K	100 0080	100 0101	100 0392	100 450	100 0069	100 0446
	4 000 K	100 0375	100 0385	100 0393	100 366	100 0208	100 0448
30°	6 000 K	100 585	100 0082	100 0394	100 0172	100 0407	100 0449
	5 000 K	100 0376	100 0386	100 0395	100 0402	100 0408	100 0451
	4 000 K	100 544	100 0071	100 0396	100 0131	100 0409	100 0452

Easy LED The brightest choice

Investing in high quality LED
lighting will give you value for
now and far in the future.

Easy LED Oy is a Finnish company
specialized in manufacturing
energy efficient LED-lighting
for industry, road, area,
commercial, retail and office
space lighting purposes.



easyled.fi

Easy LED Oy
Meriniitynkatu 11
24100 Salo, Finland
tel. +358 (0)2 737 44 20